


Cut out pattern pieces.
Lay and pin to fabric.
Draw around edges of pattern
with Indelible marker or pencil.
Sew on lines.
Cut 1/2" away from seam for
seam allowance.

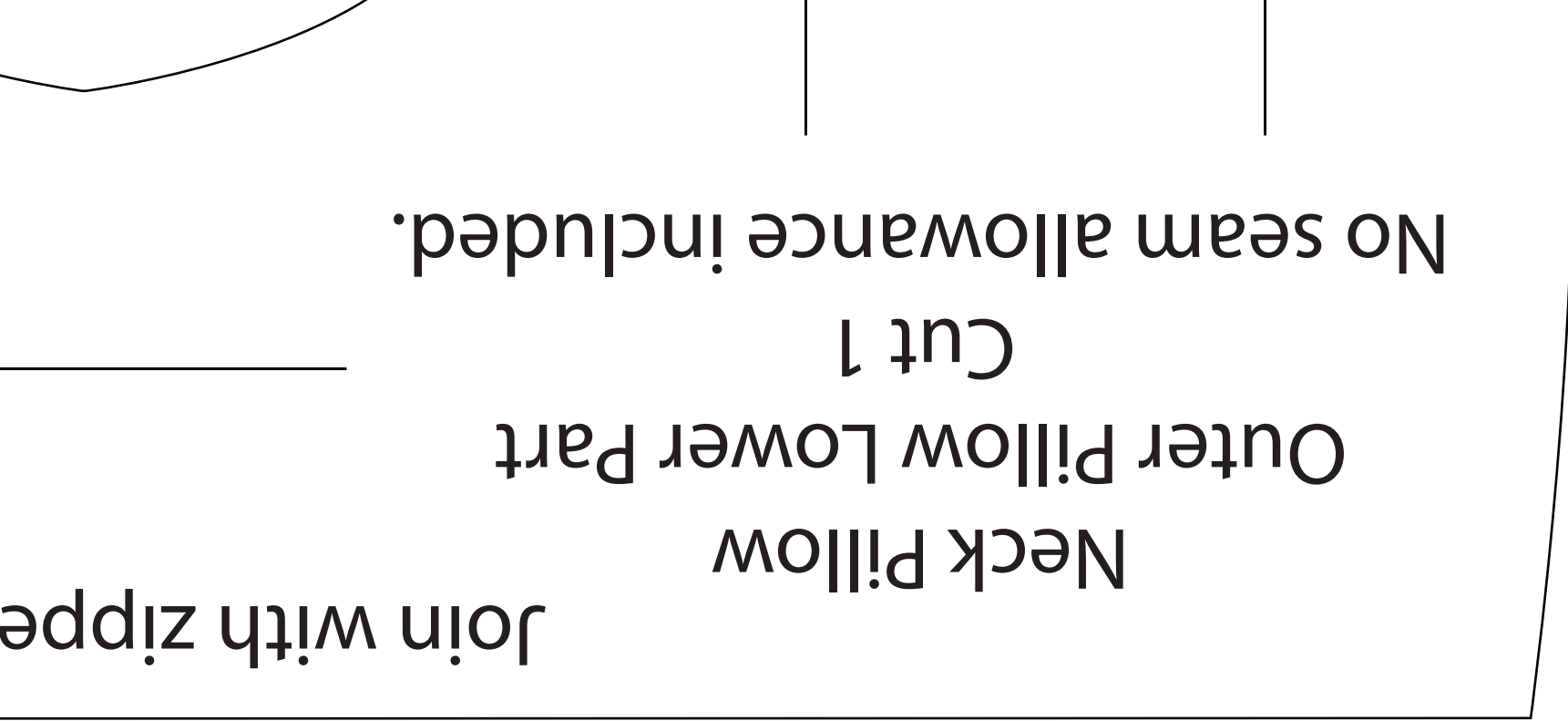
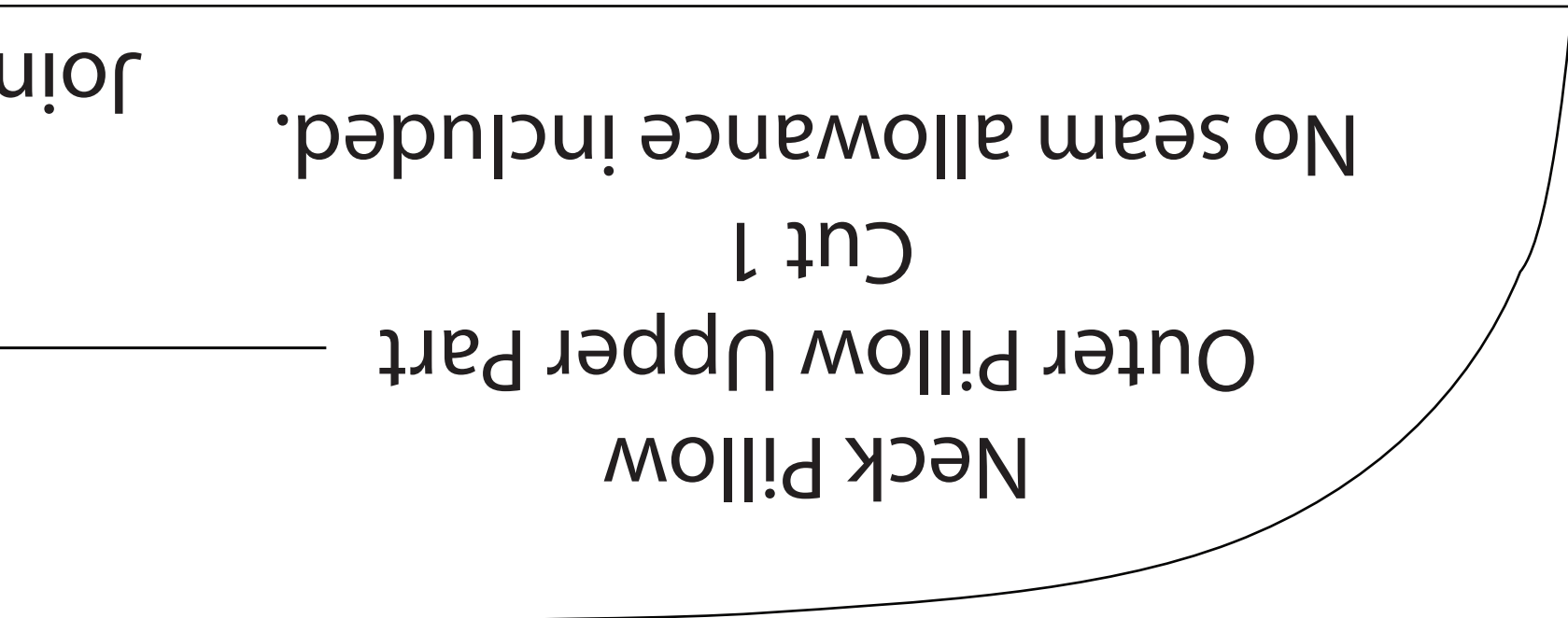
Leave open for stuffing.



Neck Pillow
Inner Pillow
Cut 2
No seam allowance
included.

bdieges designs
©2018

Ediuepes desiqns
©2018



... here.

To make the front pillow:
After inserting zipper,
lay right sides together on a
15"x18" rectangle.
Open zipper a couple inches.

... with zipper here.

edieges designs
©2018