

Scrappy Escher Triangle Star

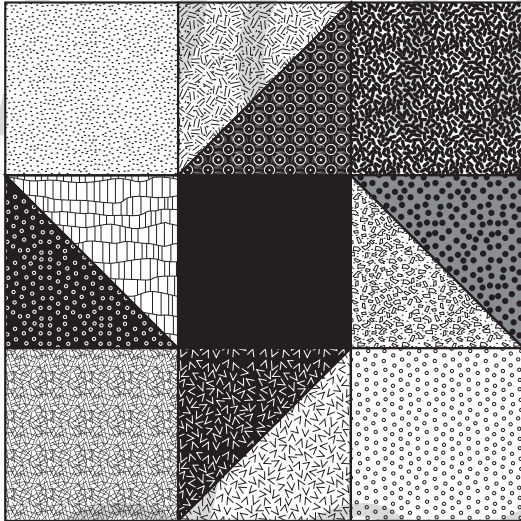
bdieges designs©2000

36"x48" without borders

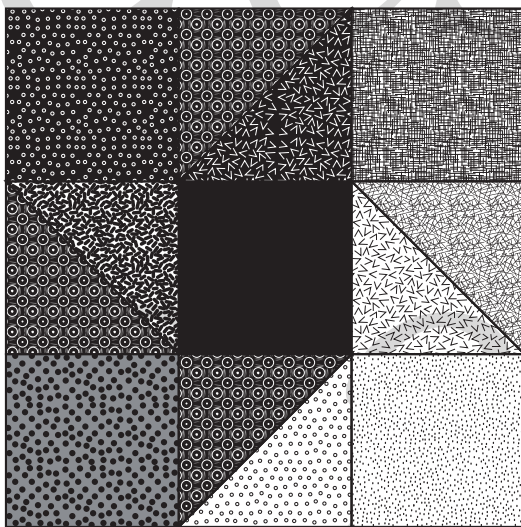
48 6" blocks made with 2" finished squares and 2" finished Half Square Triangles.

24 Center Blocks

24 Edge Blocks



Center Blocks



Edge Blocks

Cut from one fabric that is very dark (black)

48 2½" very dark (black) squares for block centers.

Cut, from as many different print fabrics as possible:

120 2½" medium dark to dark squares

72 2½" very light to light squares

120 2½"x3¼" medium dark to dark rectangles

72 2½"x3¼" very light to light rectangles

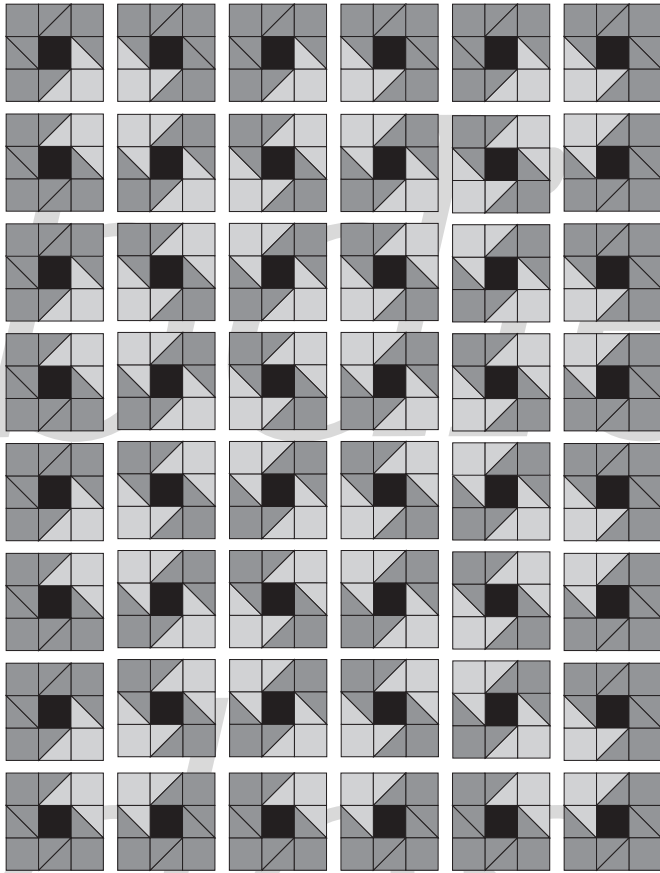
Make Half Square Triangles from the rectangles:

1. Layer each of the light rectangles with a dark rectangle, match edges carefully.
2. Layer the remaining dark rectangles with each other, each rectangle must be a different fabric.
3. Draw lines with the quick quarter and a fine mechanical pencil--corner to edge and edge to corner. (See the Blog at www.bdieges.com for the technique.)
4. Sew on the drawn lines.
5. Cut between the lines.
6. Press, seam allowance under the darker fabric.
7. Arrange blocks according to the illustration on the next page:

Make the quilt larger by making more blocks or increase the size of the blocks:

9" blocks--54"x 72" quilt--cut 3½" squares and 3⅞" squares or 3½"x4¼" rectangles 3" HST.

12" blocks--72"x 96" quilt--cut 4½" squares and 4⅞" squares or 4½"x5¼" rectangles 4" HST.



Arrange the center blocks, rotating every other block. Rotation makes the stars visible.

Arrange the edge blocks around the center, rotating each one to finish the star.

Sew the blocks together in rows.

Blocks and quilt are shown in solid colors for illustrative purposes.

Add border. Since the blocks are 6" wide finished, make the border from 3½" strips.

